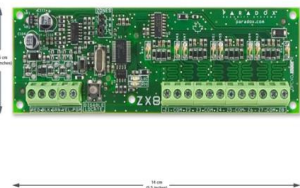




SP6000 - 8Zone K32LED Full Kit

SP6000 PC Board Features

- **Supports StayD mode**
- **4-wire expansion bus**
- **Expandable to 32 zones**
- **Expandable to 16 PGMs**
- **2 Partitions**
- **32 User Codes**
- **Supports PSC100 GSM Module**
- **Supports IP100 Internet Module**
- **Supports VDMP3 Plug-in voice dialer**
- **Supports REM3 hand-held remote keypad (require RTX3 V1.31 or higher)**
- **In-field firmware upgradeable via a 307USB and WinLoad**
- **Menu-driven programming for the Installer, Master and Maintenance codes**
- **Multiple phone numbers: 3 for monitoring station, 5 for personal dialing and 1 for pager reporting**



- **Patented 2 opto coupler dialer circuit - the most reliable dialer in the industry (US Patents 5751803, RE39406)**
- **Automatic Daylight Savings Time feature**
- **Push button software reset (reset to default values and restart)**
- **Direct connect at 9.6k baud with WinLoad**
- **256 events buffered**
- **Fits in 20cm x 25.5cm x 7.6cm (8in x 10in x 3in) and 28cm x 28cm x 7.6cm (11in x 11in x 3in) metal boxes**

SP-ZX8 8 Zone Expander

- **Spectra SP series, MG5000, MG5050**
- **Add 8 zones**
- **1 PGM output**
- **Use zone input as an anti-tamper switch input**

Metal Box Features

- **Provision for multiple module and panel mounting**
- **Many punch-out holes for simple wiring**
- **Easy door removal**
- **Convenient sizes:**

- 20cm X 25.5cm X 7.6cm (8" x 10" x 3")

- 28cm X 28cm X 7.6cm (11" x 11" x 3")

- 33cm X 40.5cm X 10cm (13" x 16" x 4")



K32 32-Zone Hardwired LED Keypad Module Features

- **Compatible with MG5000, MG5050 and Spectra SP series**
- **Supports StayD Mode**
- **32-zone LED display**
- **Separate Arm, Sleep, Stay and Off LEDs per partition**
- **In-field firmware upgrade via 307USB and WinLoad**
- **1 keypad zone input**
- **Independently set chime zones**
- **7 one-touch action buttons**
- **3 keypad-activated panic alarms**
- **Adjustable backlight**
- **Connects to 4-wire communication bus**



476 PIR PRO's Passive Features

- **Dual element sensor**
- **Immune to animals weighing up to 18kg (40lb)**
- **11m x 11m (35ft x 35ft) and up to 15m (50ft) for center beams with 88.5° viewing angle**
- **Wireless range in a typical residential environment:**



- - 35m (115ft) with MG6160 and MG6130;
- - 70m (230ft) with MG5000, MG5050 and RTX3
- *When a higher level of immunity is required, such as when animals are constantly in the detection area, consider using PMD75*
- *Patented Auto Pulse Signal Processing*
- *Automatic Temperature Compensation*
- *Alive software (alarm LED continues to display when PIR is in energy save mode without compromising battery life)*
- *3-minute energy save mode after two detections within a five-minute period*

7Amp Battery

- *Nominal Voltage:12V*
- *7.0 capacity @ 20hr rate*
- *1.7A max charge*
- *Length - 151*
- *Width - 65mm*
- *Height - 93mm*
- *Total heigh - 99mm*
- *Weirght (Kg) 2.44*



15W Siren

- *Combination 15W horn speaker with built-in siren driver*
- *Economical*
- *6-12VDC operation*
- *Typical current drain 600mA at 12VDC*
- *108dB at 1m*
- *Weather resistant ABS plastic design*



Includes...

- *1 x SP6000 PCB*
- *1 x Panel Box 20 x 20 x 7.6 cm*
- *1 x K3232-Zone Hardwired LED Keypad*
- *2x 476 Pro PIR's*
- *1 x 7Amp Battery*
- *1 x 15 Watt Siren*